

**AERODROME
CHART**

37°26'45"N
127°06'51"E

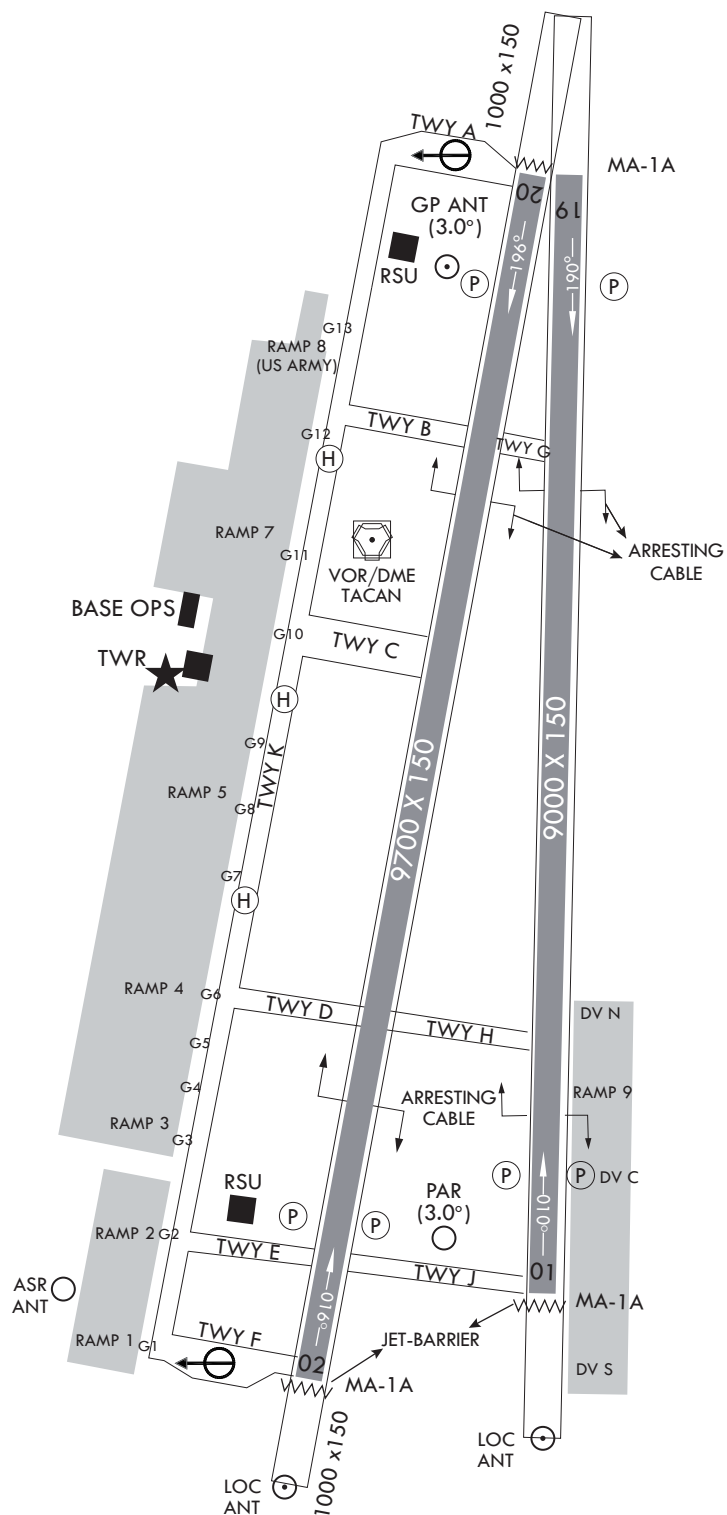
ELEV 28 m

TWR	234.5	236.6	126.2
GND	275.8	121.85	

SEOUL/Seoul

ELEVATIONS IN METERS
DIMENSION IN FEET
BEARINGS ARE MAGNETIC

VAR 8° W 2017
ANNUAL RATE OF CHANGE
4' W



NOT TO SCALE

Change : Establishment of VOR check point and Information of TWY B, arresting cables.

INTENTIONALLY

LEFT

BLANK